

AMPHENOL PART NUMBER CONFIGURATION:

U65 - X XX - X X 6 XXX

INFINITY _____
RECEPTACLE _____
STYLE _____
 B = R/A SMT, 2 LOCATION
 AND 4 SOLDERING POSTS
 E = R/A SMT, 2 LOCATION
 AND 4 SCREW MOUNT HOLES
CONNECTOR TYPE _____
 04 = 4X
 12 = 12X
PLATING _____
 1 = 50µ" GOLD
 2 = 30µ" GOLD
 3 = GOLD FLASH OVER
 PALLADIUM-NICKEL (LEAD FREE)
 4 = 50µ" GOLD (RoHS COMPLIANT)
 5 = 30µ" GOLD (RoHS COMPLIANT)
OPTION _____
 0= 2 PIECE LOCKING PLATE (SHIPPED LOOSE)
 1= ONE PIECE LOCKING PLATE (SHIPPED LOOSE)
 2= NO LOCKING PLATE
 3= NO LOCKING PLATE AND NO GASKET

PACKAGING/SPECIAL
 (NOTE: ALL "M" OPTIONS ARE FOR STYLE E
 WITH .062" TO .093" THICK PCB'S ONLY)
 NO DIGIT = TRAY PACKAGING
 NO REAR COVER
 C = TRAY PACKAGING
 WITH REAR COVER (SHIPPED LOOSE)
 M = TRAY PACKAGING, NO REAR COVER,
 M2 SCREWS INCLUDED (SHIPPED LOOSE)
 CM = TRAY PACKAGING, W/ REAR COVER,
 M2 SCREWS INCLUDED (BOTH SHIPPED LOOSE)
 T = TAPE & REEL PACKAGING
 NO REAR COVER
 CT = TAPE & REEL PAKAGING
 W/ REAR COVER (SHIPPED LOOSE)
 MT = TAPE & REEL PAKAGING, NO REAR COVER,
 M2 SCREWS INCLUDED (SHIPPED LOOSE)
 CMT = TAPE & REEL PAKAGING, W/ REAR COVER,
 M2 SCREWS INCLUDED (BOTH SHIPPED LOOSE)

KEYING OPTION
 0 = NO KEYING (STD)
 1 = KEYING 1 & 6
 2 = KEYING 2 & 6
 3 = KEYING 3 & 5
 4 = KEYING 4 & 5
MOUNTING STYLE
 LANYARD LATCH, (4) SOLDER
 POSTS OR (4) MOUNTING HOLES

1. MATERIAL:
 PLASTIC HOUSING:
 HIGH TEMPERATURE RESISTANT NYLON, FLAMMABILITY RATING UL94V-0.
 CONTACTS:
 PHOSPHOR BRONZE
 PLATING OPTION 1 OR 2 (50µ" OR 30µ" GOLD):
 50µ" [1.27 µm] OR 30µ" [0.76 µm] MIN. GOLD OVER 50µ" [1.27 µm] MIN. NICKEL ON CONTACT
 MATING SURFACES. 150µ" [3.81 µm] MIN. TIN-LEAD (90/10) OVER 50µ" [1.27 µm] NICKEL ON CONTACT TAILS.
 PLATING OPTION 3 (GOLD FLASH OVER PALLADIUM-NICKEL):
 2µ" [0.05 µm] MIN. GOLD OVER 25µ" [0.635 µm] MIN. PALLADIUM-NICKEL ON CONTACT MATING
 SURFACES. 0.3µ" [0.007 µm] MIN. GOLD OVER 1.2µ" [0.03 µm] MIN. PALLADIUM-NICKEL ON
 CONTACT TAILS. 50µ" [1.27 µm] MIN. NICKEL UNDER PLATING.
 PLATING OPTION 4 OR 5 (RoHS) (50µ" OR 30µ" GOLD):
 50µ" [1.27 µm] OR 30µ" [0.76 µm] MIN. GOLD OVER 50µ" [1.27 µm] MIN. NICKEL ON CONTACT
 MATING SURFACES. 2µ" [0.05 µm] MIN. GOLD OVER 50µ" [1.27 µm] MIN. NICKEL ON CONTACT TAILS.
 METAL SHELL:
 DIE CASTING ALLOY
 PLATING:
 100µ" [2.54 µm] MIN. NICKEL OVER COPPER UNDER LAYER
 GASKET:
 STAINLESS STEEL
 LOCKING PLATE:
 STAINLESS STEEL
 M2 SCREWS:
 STEEL WITH ZINC PLATING
 2. TEMPERATURE RANGE:
 -40°C TO +85°C

REVISIONS				
SYM	ZONE	ECN, ERN NO.	DATE	APPRD.
C		PROPOSAL	2006/05/23	
D		PROPOSAL	JUN15/05	

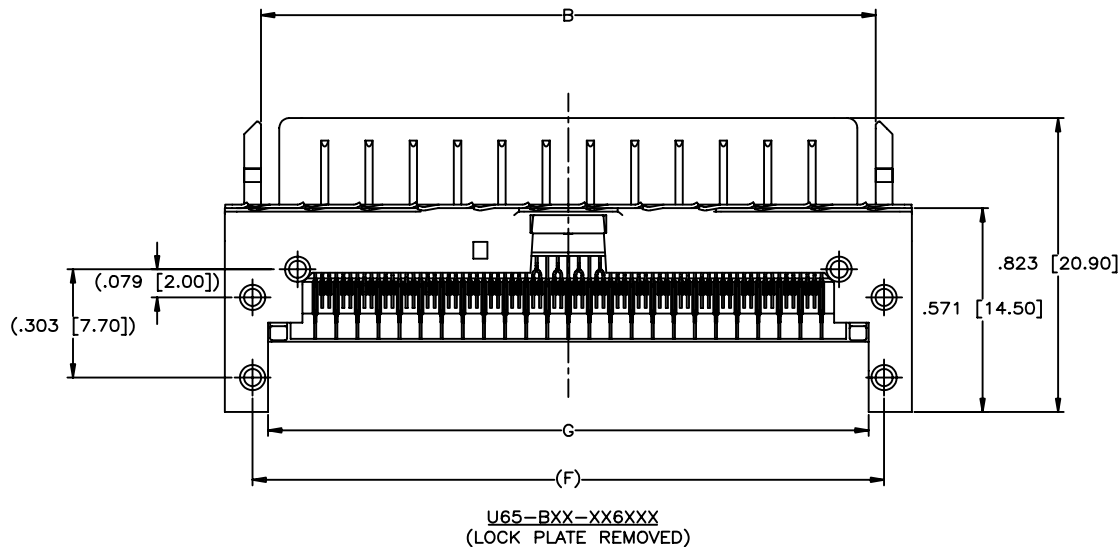
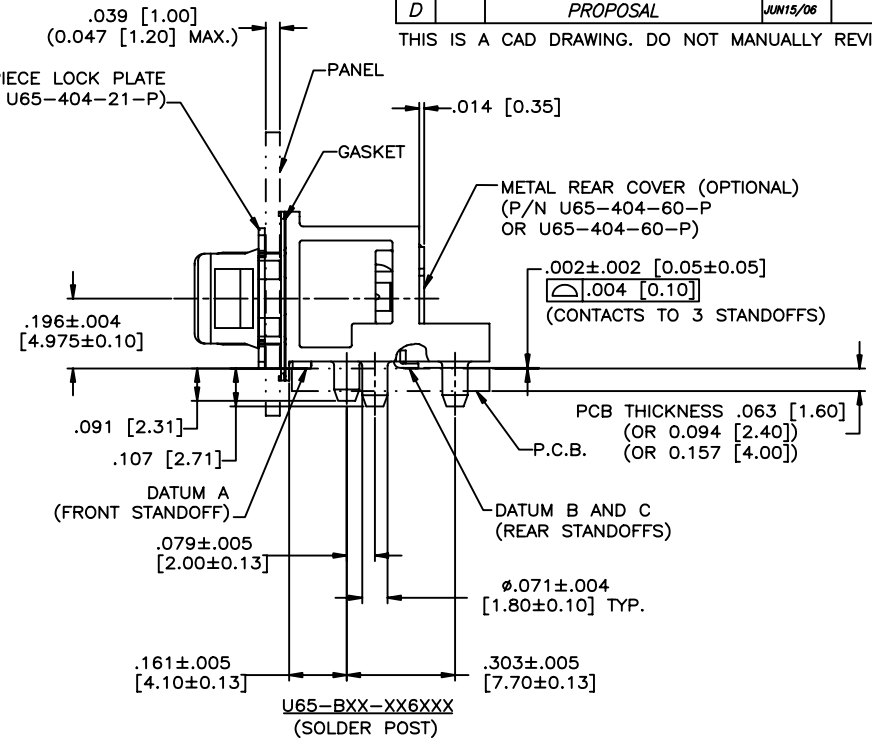
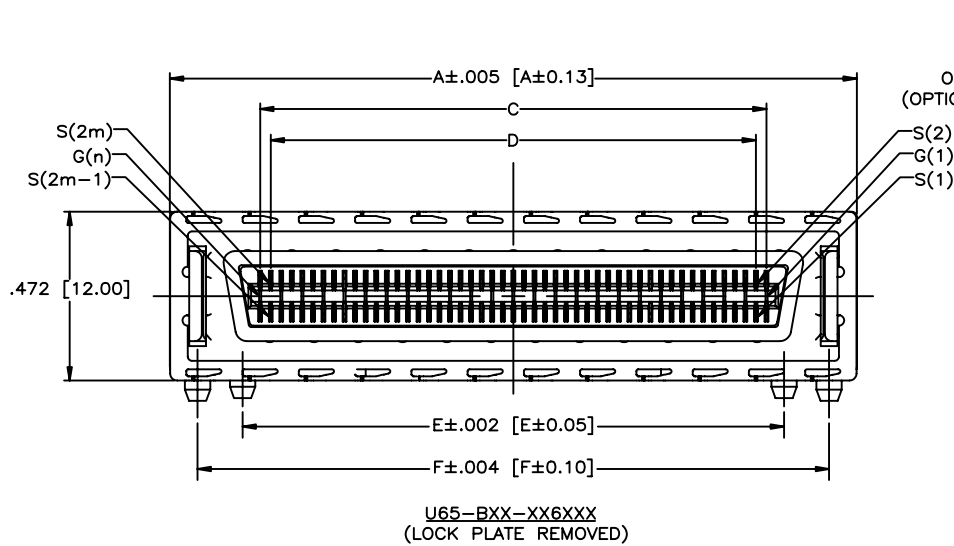
THIS IS A CAD DRAWING. DO NOT MANUALLY REVISE.

THIS DOCUMENT CONTAINS PROPRIETARY INFORMATION AND SUCH INFORMATION
 MAY NOT BE DISCLOSED TO OTHERS FOR ANY PURPOSE OR USED FOR MANUFACTURING
 PURPOSES WITHOUT WRITTEN PERMISSION FROM AMPHENOL CANADA CORP.

DRAWN	M. LONG	DATE	2005/05/17	Amphenol Canada Corp.	
DESIGNED					
CHECKED	J.SI	DATE	2005/05/17		
I. E. APPRD.					
Q. A. APPRD.				TITLE	
DWG. APPRD.				INFINITY 4X/12X RECEPTACLE, LANYARD STYLE, FIXED BOARD, RIGHT ANGLE SMT, (4) SOLDER POSTS OR (4) MOUNTING HOLES	
ENG. REL. NO.				DWG	DRAWING NO.
REF.				A	P-U65-XXX-XX6XXX
DIMENSIONS ARE IN	CODE ID. NO.				REV.
INCHES [mm]	03554	SCALE	2/1	WT.	D
					SHEET 1 OF 4

REVISIONS				
SYM	ZONE	ECN, ERN NO.	DATE	APPRD.
C		PROPOSAL	2006/05/23	
D		PROPOSAL	JUN15/06	

THIS IS A CAD DRAWING. DO NOT MANUALLY REVISE.



DIMENSION TABLE:

PART NUMBER	U65-X04-XX6XXX	U65-X12-XX6XXX
A	.978 [24.85]	1.923 [48.85]
B	.776 [19.70]	1.720 [43.70]
C	.472 [12.00]	1.417 [36.00]
D	.413 [10.50]	1.358 [34.50]
E	.571 [14.50]	1.516 [38.50]
F	.823 [20.90]	1.768 [44.90]
G	.736 [18.70]	1.681 [42.70]
H	.894 [22.70]	1.839 [46.70]
K	.776 [19.70]	1.720 [43.70]
m	m = 1 - 8	m = 1 - 24
n	n = 1 - 9	n = 1 - 25
P	.207 [5.25]	.679 [17.25]
R	.089 [2.25]	.561 [14.25]
S	.148 [3.75]	.620 [15.75]

** REFER TO [mm] AS PRIMARY DIMENSIONS.

DRAWN	M.LONG	DATE	2005/05/17
DESIGNED			
CHECKED	J.SI	DATE	2005/05/17
I. E. APPRD.			
Q. A. APPRD.			
DWG. APPRD.			
ENG. REL. NO.			
REF.			
DIMENSIONS ARE IN	CODE ID. NO.		
INCHES [mm]	03554		

Amphenol Canada Corp.

TITLE
INFINITY 4X/12X RECEPTACLE, LANYARD
STYLE, FIXED BOARD, RIGHT ANGLE SMT,
(4) SOLDER POSTS OR (4) MOUNTING HOLES

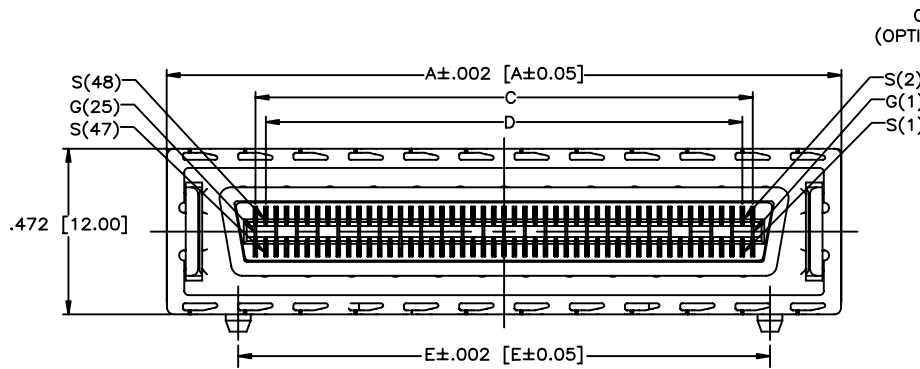
DWG. DRAWING NO. P-U65-XXX-XX6XXX REV. D

SCALE 2/1 WT. _____ SURF. _____ SHEET 2 OF 4

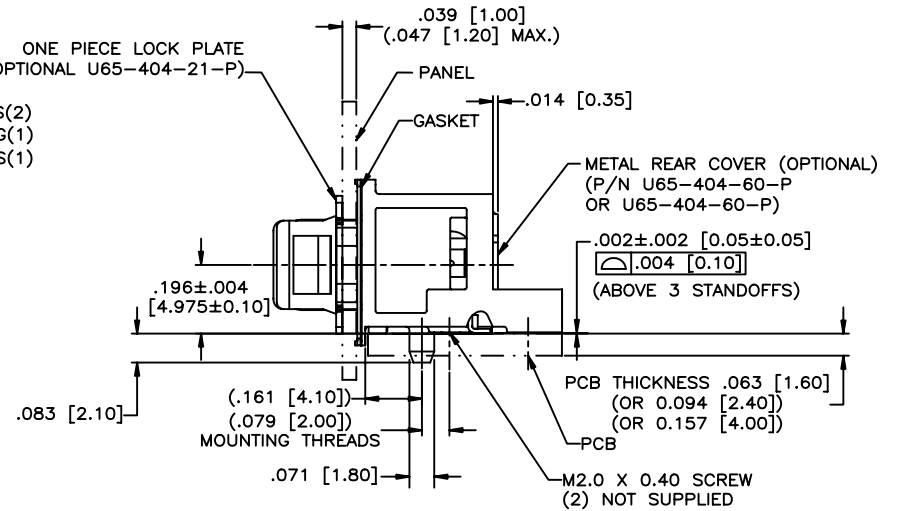
THIS DOCUMENT CONTAINS PROPRIETARY INFORMATION AND SUCH INFORMATION MAY NOT BE DISCLOSED TO OTHERS FOR ANY PURPOSE OR USED FOR MANUFACTURING PURPOSES WITHOUT WRITTEN PERMISSION FROM AMPHENOL CANADA CORP.

REVISIONS				
SYM	ZONE	ECN, ERN NO.	DATE	APPRD.
C		PROPOSAL	2006/05/23	
D		PROPOSAL	JUN15/06	

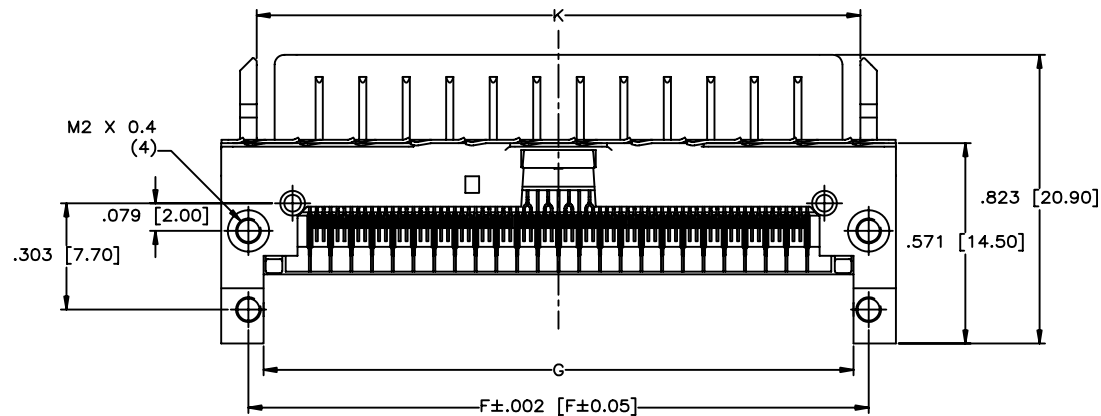
THIS IS A CAD DRAWING. DO NOT MANUALLY REVISE.



U65-EXX-XX6XXX
(LOCK PLATE REMOVED)



U65-EXX-XX6XXX
(SCREW MOUNT)



U65-EXX-XX6XXX
(LOCK PLATE REMOVED)

DRAWN	M.LONG	DATE	2005/05/17
DESIGNED			
CHECKED	J.SI	DATE	2005/05/17
I. E. APPRD.			
Q. A. APPRD.			
DWG. APPRD.			
ENG. REL. NO.			
REF.			
DIMENSIONS ARE IN	CODE ID. NO.		
INCHES [mm]	03554		

Amphenol Canada Corp.

TITLE
INFINITY 4X/12X RECEPTACLE, LANYARD
STYLE, FIXED BOARD, RIGHT ANGLE SMT,
(4) SOLDER POSTS OR (4) MOUNTING HOLES

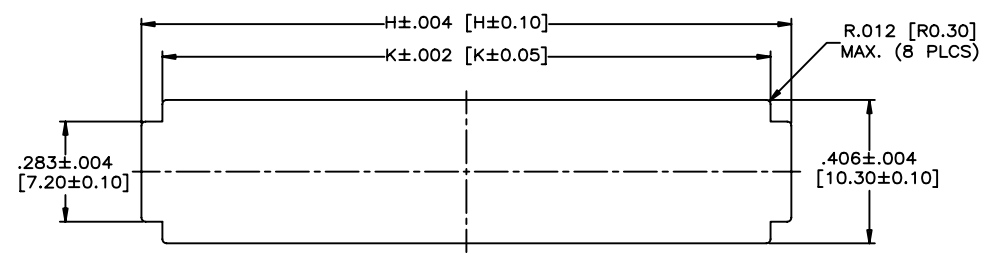
DWG	DRAWING NO.	REV.
A	P-U65-XXX-XX6XXX	D

THIS DOCUMENT CONTAINS PROPRIETARY INFORMATION AND SUCH INFORMATION
MAY NOT BE DISCLOSED TO OTHERS FOR ANY PURPOSE OR USED FOR MANUFACTURING
PURPOSES WITHOUT WRITTEN PERMISSION FROM AMPHENOL CANADA CORP.

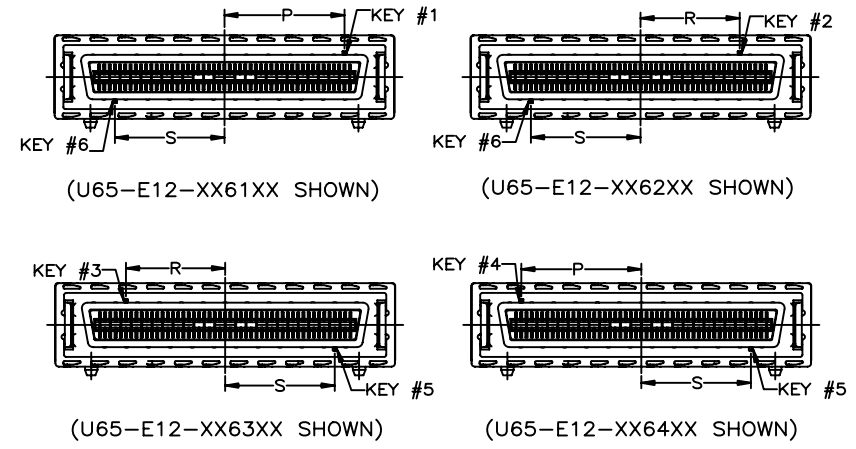
SCALE	2/1	WT.		SURF.		SHEET	3 OF 4
-------	-----	-----	--	-------	--	-------	--------

REVISIONS			
SYM	ZONE	ECN, ERN NO.	DATE
C		PROPOSAL	2006/05/23
D		PROPOSAL	JUN15/06

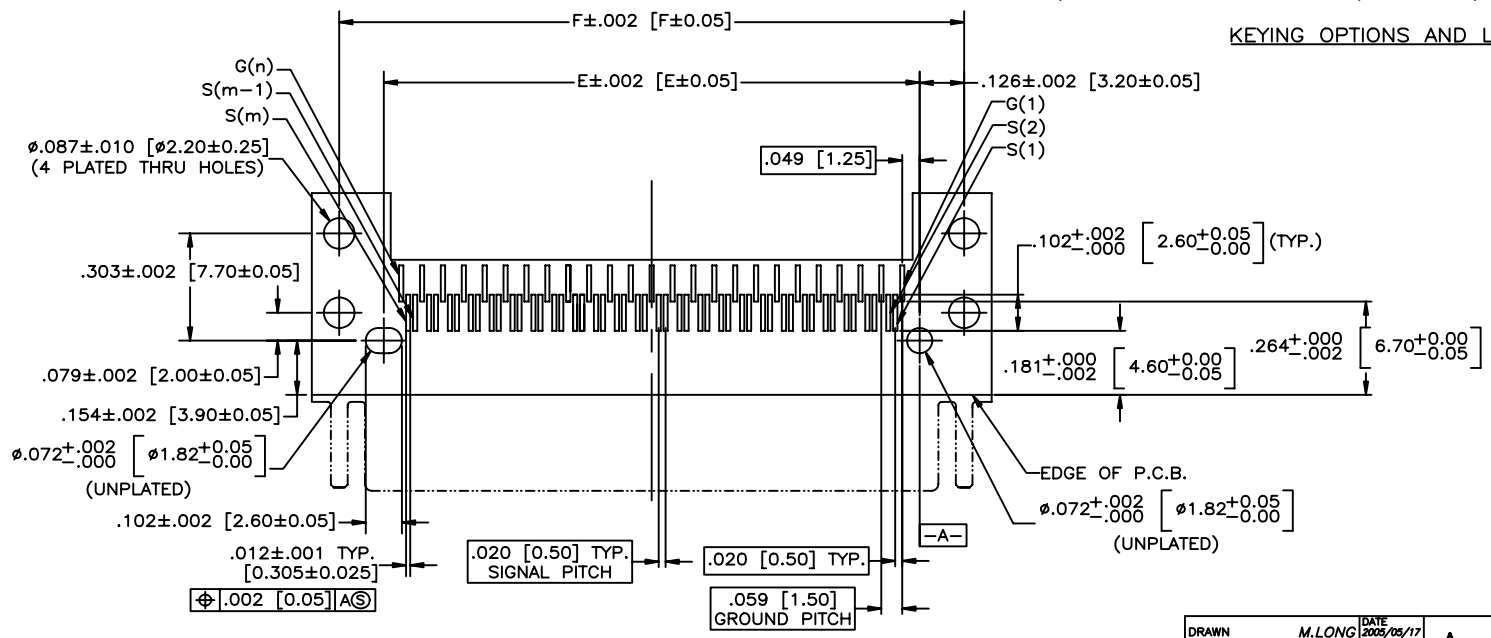
THIS IS A CAD DRAWING. DO NOT MANUALLY REVISE.



RECOMMENDED PANEL CUTOUT



KEYING OPTIONS AND LOCATIONS



RECOMMENDED P.C.B. LAYOUT
(COMPONENTS SIDE OF BOARD)

THIS DOCUMENT CONTAINS PROPRIETARY INFORMATION AND SUCH INFORMATION MAY NOT BE DISCLOSED TO OTHERS FOR ANY PURPOSE OR USED FOR MANUFACTURING PURPOSES WITHOUT WRITTEN PERMISSION FROM AMPHENOL CANADA CORP.

DRAWN	M.LONG	DATE	2005/05/17
DESIGNED			
CHECKED	J.SI	DATE	2005/05/17
I. E. APPRD.			
Q. A. APPRD.			
DWG. APPRD.			
ENG. REL. NO.			
REF.			
DIMENSIONS ARE IN		CODE ID. NO.	03554
INCHES [mm]			

Amphenol Canada Corp.

TITLE		REV.
INFINITY 4X/12X RECEPTACLE, LANYARD STYLE, FIXED BOARD, RIGHT ANGLE SMT, (4) SOLDER POSTS OR (4) MOUNTING HOLES		
DWG	DRAWING NO.	D
A	P-U65-XXX-XX6XXX	
SCALE	2/1	
WT.		
SURF.		
SHEET 4 OF 4		